

# At a Glance: CIHR's Research Excellence Framework

CIHR believes that excellent research is rigorous, inclusive, and conducted in ways that meaningfully integrate a diversity of perspectives, disciplines, and methods in order to maximize impact and benefit to society.

It recognizes that biological, socio-economic, cultural, and experiential differences impact health and should be considered for research and related activities to be of benefit. An inclusive concept of research excellence positively influences who sets research priorities; who conducts, participates in and benefits from research; how research is conducted; and how it is assessed.

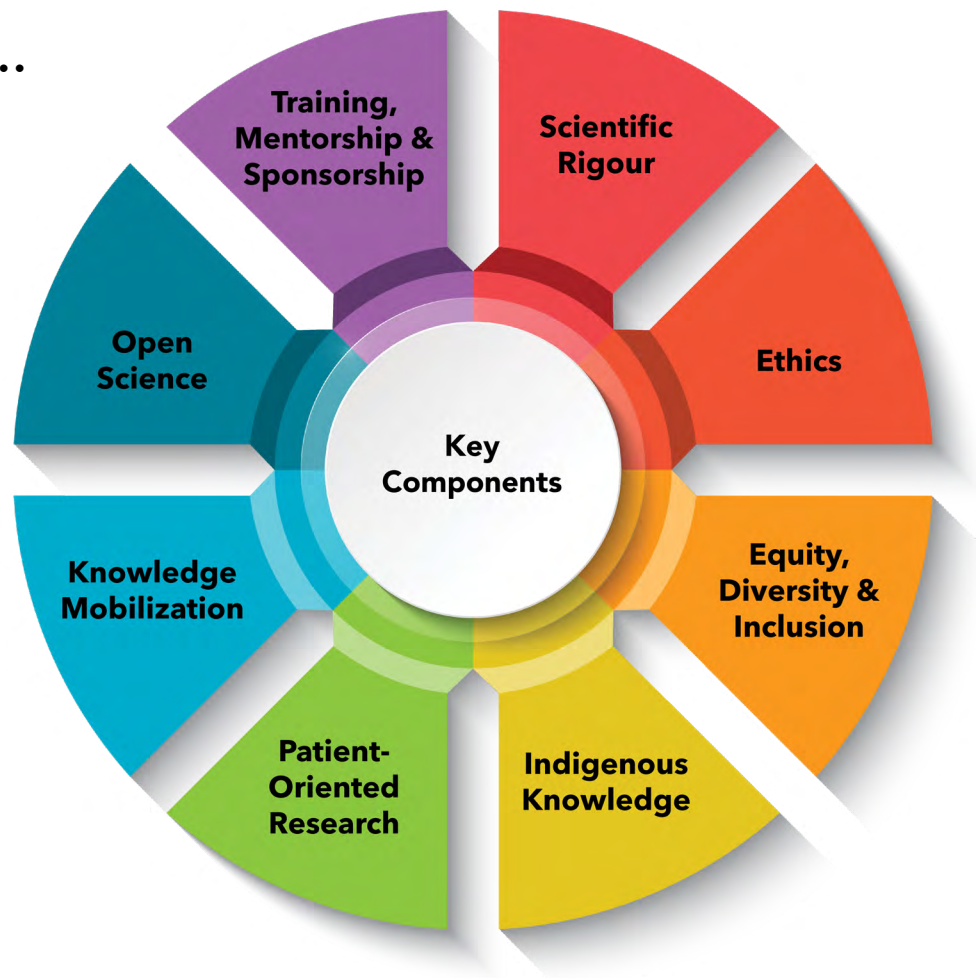
## Research Excellence is...

**Holistic:** spans how research is conceptualized, prioritized, taught, carried out, assessed, funded and used.

**Adaptable:** not one-size fits-all, but rather context- and content-specific.

**Evergreen:** designed to be adjustable as new evidence emerges, and as science and society evolve.

... and is comprised of eight key components that should be considered and addressed, whenever relevant and appropriate, within all CIHR-funded research.



The [CIHR Research Excellence Framework](#) will guide the advancement of research excellence in all its diversity (CIHR Strategic Plan 2021–2031, Priority A) throughout CIHR's strategies, policies, and practices. An [implementation plan](#) outlines ongoing and planned actions.

If you have questions, comments or wish to discuss topics related to research excellence, contact: [excellence@cihr-irsc.gc.ca](mailto:excellence@cihr-irsc.gc.ca)

